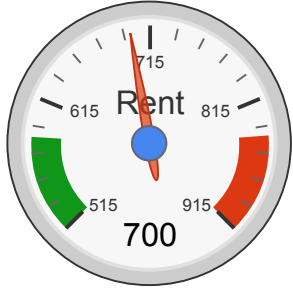


# rentometer

## East Havens Avenue, Mitchell, SD

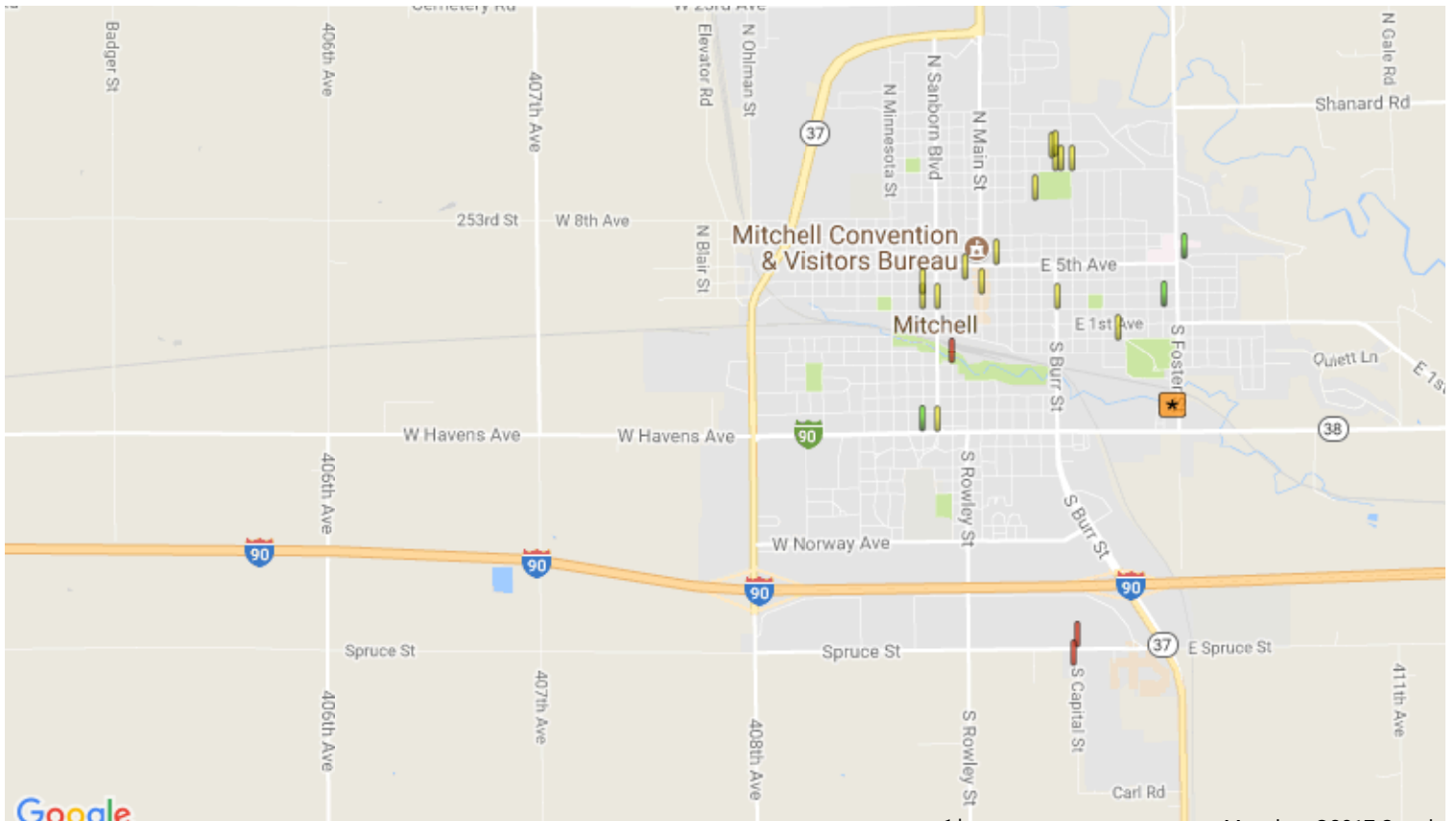
Results as of 11 Jul 2017

Search Radius: Auto, Max Listing Age: 24 mon



Your results are based on **25** 2-bedroom rentals in a **1.87** mile radius.

AVERAGE	MEDIAN	\$575-\$850	\$625-\$800
<b>\$715</b> $\pm 3\%$	<b>\$700</b>	<b>80%</b>	<b>60%</b>



Google

1 km

Map data ©2017 Google

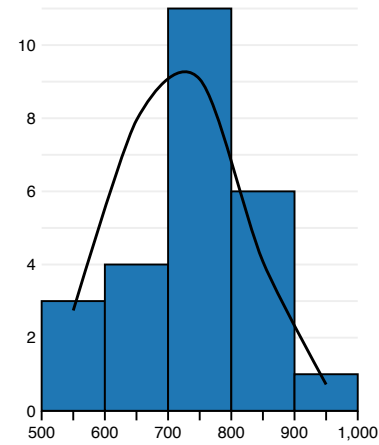
East Havens Avenue, Mitchell, SD

## Summary Statistics

<b>Listing Count</b>	<b>25</b>
Max	\$930
Min	\$500
Median	\$700
Mean ( $\bar{x}$ )	\$715
Standard Deviation (s)	\$100
Standard Error	\$20
Coefficient of Variation	13.9%
Skew	-0.04
Kurtosis	-0.42

## Price distribution

\$515	\$587	\$615	\$715	\$815	\$842	\$915
-2s	-1.28s	-1s	$\bar{x}$	+1s	+1.28s	+2s



## Listings Used In This Search

Bldg Type	Address	Distance	Price	Size	Beds	Baths	Last List Date
House	929 E Hanson St, Mitchell, SD 57301	0.63 mi	\$800		2 bed	1ba	Mar 2017
Apartment	1201 E 2nd Ave, Mitchell, SD 57301	0.73 mi	\$500		2 bed	1ba	Feb 2016
House	N Burr St & E 2nd Ave, Mitchell, SD 57301	1.04 mi	\$800	900 ft <sup>2</sup>	2 bed	1ba	Jun 2017
Duplex	1304 Bridle Dr, Mitchell, SD 57301	1.05 mi	\$575		2 bed	1ba	Dec 2016
House	S Duff St & W Birch Ave, Mitchell, SD 57301	1.46 mi	\$850	1,000 ft <sup>2</sup>	2 bed	2.5ba	Dec 2016
Apartment	N Main St & E 3rd Ave, Mitchell, SD 57301	1.48 mi	\$750	800 ft <sup>2</sup>	2 bed	1ba	Oct 2016
Apartment	W Havens Ave & S Sanborn Blvd, Mitchell, SD 57301	1.51 mi	\$600	800 ft <sup>2</sup>	2 bed	1ba	Apr 2016
Apartment	E 5th Ave & N Lawler St, Mitchell, SD 57301	1.52 mi	\$800	950 ft <sup>2</sup>	2 bed	1ba	Mar 2017
Townhouse	E Spruce St & S Capital St, Mitchell, SD 57301	1.59 mi	\$930	1,000 ft <sup>2</sup>	2 bed	2.5ba	May 2017
Apartment	W Havens Ave & S Edmunds St, Mitchell, SD 57301	1.61 mi	\$575	800 ft <sup>2</sup>	2 bed	1ba	May 2016
Apartment	W 4th Ave & N Rowley St, Mitchell, SD 57301	1.61 mi	\$650	600 ft <sup>2</sup>	2 bed	1ba	Oct 2016
Apartment	421 E 9th Ave, Mitchell, SD 57301	1.67 mi	\$750		2 bed	2ba	May 2017
House	N Sanborn Blvd & W 2nd Ave, Mitchell, SD 57301	1.68 mi	\$600		2 bed	1ba	Jul 2017
Apartment	2311 S Capital St, Mitchell, SD 57301	1.71 mi	\$850	1,000 ft <sup>2</sup>	2 bed	2.5ba	Nov 2016
Apartment	N Capital St & E 11th Ave, Mitchell, SD 57301	1.74 mi	\$700	675 ft <sup>2</sup>	2 bed	1ba	Jun 2017

Bldg Type	Address	Distance	Price	Size	Beds	Baths	Last List Date
Apartment	N Capital St & E 11th Ave, Mitchell, SD 57301	1.74 mi	\$700	600 ft <sup>2</sup>	2 bed	1ba	Jun 2017
Apartment	614 E 11th Ave, Mitchell, SD 57301	1.76 mi	\$700		2 bed	1ba	Dec 2015
House	W 2nd Ave & N Edmunds St, Mitchell, SD 57301	1.77 mi	\$750		2 bed	1ba	Dec 2016
House	W 2nd Ave & N Edmunds St, Mitchell, SD 57301	1.77 mi	\$800	900 ft <sup>2</sup>	2 bed	2ba	Jul 2017
Apartment	N Burr St & E 11th Ave, Mitchell, SD 57301	1.78 mi	\$700	650 ft <sup>2</sup>	2 bed	1ba	Dec 2016
Apartment	N Burr St & E 11th Ave, Mitchell, SD 57301	1.78 mi	\$700	600 ft <sup>2</sup>	2 bed	1ba	Jun 2017
Duplex	W 3rd Ave & N Edmunds St, Mitchell, SD 57301	1.81 mi	\$650	900 ft <sup>2</sup>	2 bed	1ba	Mar 2016
Apartment	1123 N Burr St, Mitchell, SD 57301	1.86 mi	\$700	600 ft <sup>2</sup>	2 bed	1ba	Feb 2016
Apartment	N Burr St & E 12th Ave, Mitchell, SD 57301	1.87 mi	\$700	650 ft <sup>2</sup>	2 bed	1ba	Jun 2017
Apartment	N Burr St & E 12th Ave, Mitchell, SD 57301	1.87 mi	\$725	600 ft <sup>2</sup>	2 bed	1ba	Jun 2017

*The research and data included in this report is aggregated from a variety of sources and many are third parties that are not affiliated with Rentometer, Inc. The information is believed to be accurate, but Rentometer, Inc. does not provide a warranty of any kind, either expressed or implied.*