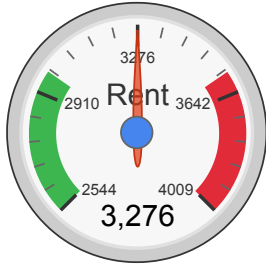


Please provide the price you pay in monthly rent for analysis.



University City San Diego, CA

Results based on 92, 3-bedroom rentals seen within 6 months

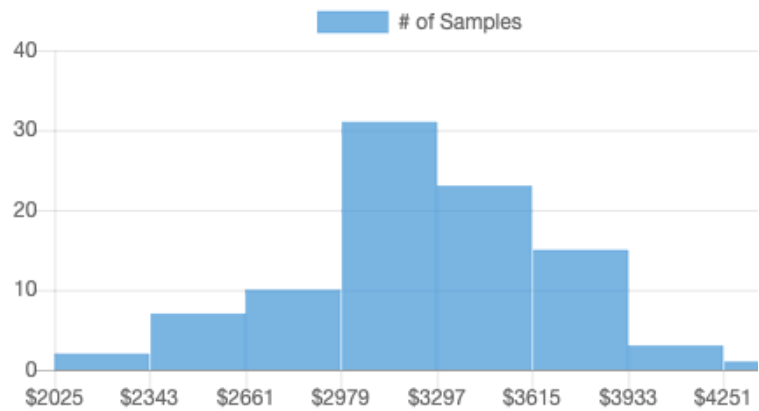
AVERAGE	MEDIAN	25TH PERCENTILE	75TH PERCENTILE
\$3,276 $\pm 1\%$	\$3,200	\$2,976	\$3,577

Report generated: 23 Sep 2019

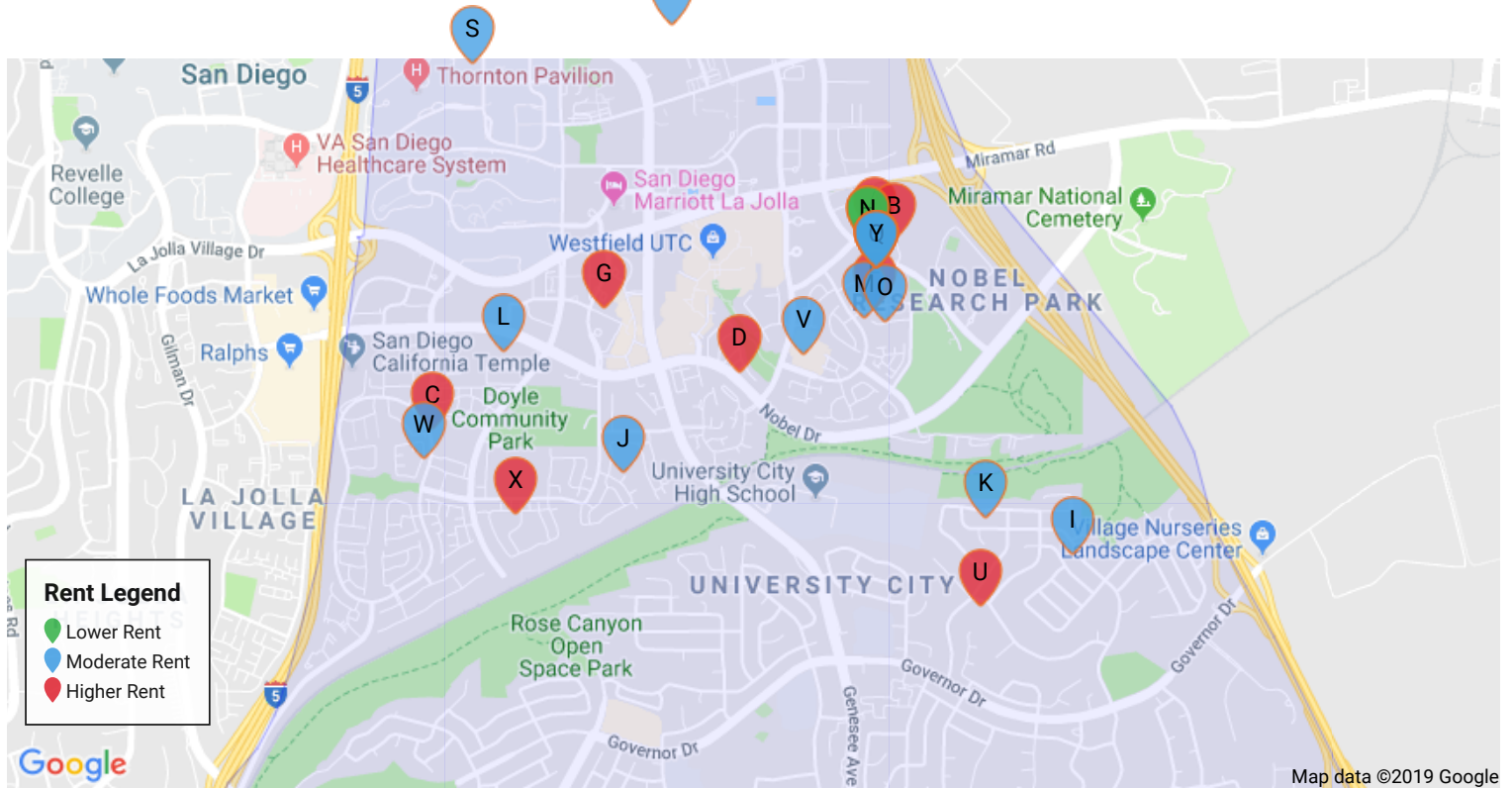
Summary Statistics

Sample Size	92
Sample Min	\$2,025
Sample Max	\$4,565
Sample Median	\$3,200
Sample Mean	\$3,276
Sample Standard Deviation	\$446
25th – 75th Percentile	\$2,976 – 3,577
10th – 90th Percentile	\$2,706 – 3,846
5th – 95th Percentile	\$2,544 – 4,008

Rent Distribution



Sample of Listings Used



Address	Rent	Size	\$/ft ²	Beds	Baths	Bldg Type	Last Seen
A 9085 Judicial Dr, San Diego, CA 92122	\$3,650	1,482 ft ²	\$2.46/ft ²	3 bed	2.0ba	Apartment	Sep 2019
B 9065 Sydney, CT, San Diego, CA 92122	\$4,125	1,516 ft ²	\$2.72/ft ²	3 bed	2.0ba	Apartment	Sep 2019
C 7681 Palmilla Dr, San Diego, CA 92122	\$3,725	1,500 ft ²	\$2.48/ft ²	3 bed	2.0ba	Apartment	Sep 2019
D 4459 Via Realzar, San Diego, CA 92122	\$3,700	1,512 ft ²	\$2.45/ft ²	3 bed	2.5ba	Townhouse	Sep 2019
E \$1780 / 3 Br 1348ft ² (Utc, LA Jolla), 5280 Fiore Terrace, San Diego, CA 92121	\$3,860	1,348 ft ²	\$2.86/ft ²	3 bed	2.0ba	Apartment	Sep 2019
F 5325 Toscana Way, San Diego, CA 92122	\$3,790	1,267 ft ²	\$2.99/ft ²	3 bed	2.0ba	Apartment	Sep 2019
G 8775 Costa Verde Blvd, San Diego, CA 92122	\$3,925	1,416 ft ²	\$2.77/ft ²	3 bed	2.0ba	Apartment	Sep 2019
H 9085 Judicial Dr, San Diego, CA 92122	\$1,482 *	3,650 ft ²	\$0.41/ft ²	3 bed	2.0ba	Apartment	Sep 2019
I 4731 Cather Ave, San Diego, CA 92122	\$3,195	1,500 ft ²	\$2.13/ft ²	3 bed	2.0ba	House	Sep 2019
J 4150 Camino Ticino, San Diego, CA 92122	\$3,000			3 bed	1.5ba	Condo	Sep 2019
K 4421 Huggins St, San Diego, CA 92122	\$3,200	1,254 ft ²	\$2.55/ft ²	3 bed	2.0ba	House	Sep 2019
L 3979 Nobel Dr Unit 316, San Diego, CA 92122	\$3,000	1,100 ft ²	\$2.73/ft ²	3 bed	2.5ba	Townhouse	Sep 2019
M 5275 Toscana Way, San Diego, CA 92122	\$3,523	1,267 ft ²	\$2.78/ft ²	3 bed	2.0ba	Apartment	Sep 2019
N 9085 Judicial Dr, San Diego, CA 92122	\$1,482 *	3,750 ft ²	\$0.40/ft ²	3 bed	2.0ba	Apartment	Sep 2019
O 5305 Toscana Way, San Diego, CA 92122	\$3,493	1,267 ft ²	\$2.76/ft ²	3 bed	2.0ba	Apartment	Sep 2019
P \$1780 / 3 Br 1348ft ² (Utc, LA Jolla), 5280 Fiore Terrace, San Diego, CA 92121	\$2,830	957 ft ²	\$2.96/ft ²	3 bed	2.0ba	Apartment	Sep 2019
Q \$1780 / 3 Br 1348ft ² (Utc, LA Jolla), 5280 Fiore Terrace, San Diego, CA 92121	\$3,345	1,200 ft ²	\$2.79/ft ²	3 bed	2.0ba	Apartment	Sep 2019

	Address	Rent	Size	\$/ft ²	Beds	Baths	Bldg Type	Last Seen
R	9604 Caminito Del Feliz, San Diego, CA 92121	\$3,100	1,130 ft ²	\$2.74/ft ²	3 bed	1.5ba	Condo	Sep 2019
S	9415 Campus Point Dr, LA Jolla, CA 92093	\$3,200			3 bed	1.5ba	Apartment	Sep 2019
T	5782 Scripps St, San Diego, CA 92122	\$3,200			3 bed	2.0ba	House	Sep 2019
U	4429 Robbins St, San Diego, CA 92122	\$3,600	1,400 ft ²	\$2.57/ft ²	3 bed	2.0ba	House	Aug 2019
V	8895 Towne Centre Dr #105, San Diego, CA 92122	\$2,995	1,394 ft ²	\$2.15/ft ²	3 bed	2.5ba	Townhouse	Aug 2019
W	7602 Palmilla Dr, San Diego, CA 92122	\$3,550	1,394 ft ²	\$2.55/ft ²	3 bed	2.5ba	Condo	Aug 2019
X	7838 Camino Noguera, San Diego, CA 92122	\$3,700	1,400 ft ²	\$2.64/ft ²	3 bed	2.5ba	Condo	Aug 2019
Y	\$1780 / 3 Br 1348ft ² (Utc, LA Jolla), 5280 Fiore Terrace, San Diego, CA 92121	\$3,080	1,146 ft ²	\$2.69/ft ²	3 bed	2.0ba	Apartment	Aug 2019

**This price appears to be an outlier and was excluded*

The research and data included in this report is aggregated from a variety of sources and many are third parties that are not affiliated with Rentometer, Inc. The information is believed to be accurate, but Rentometer, Inc. does not provide a warranty of any kind, either expressed or implied.

Copyright ©2019 Rentometer, Inc.